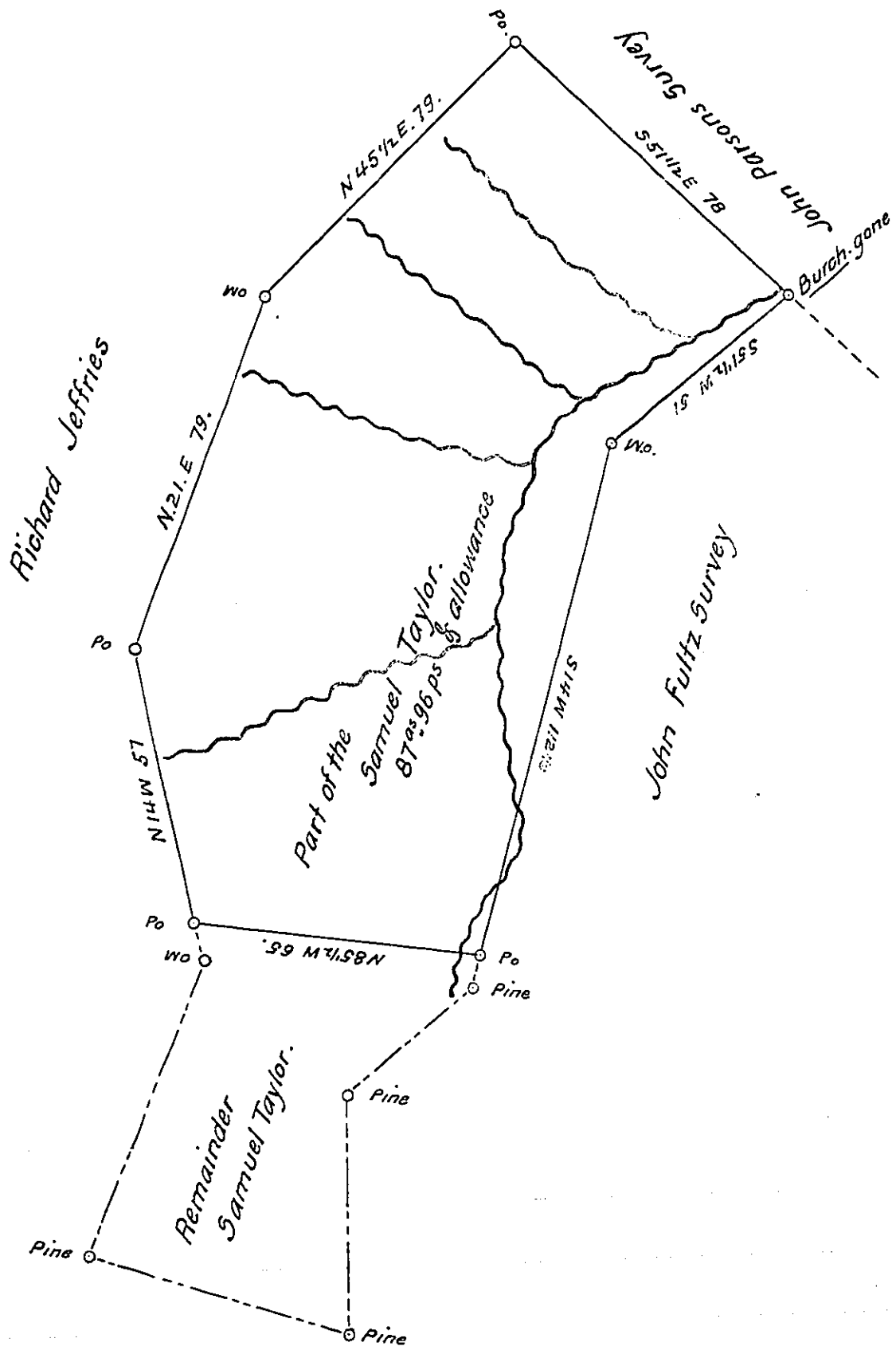


FORM NO 1.



*Draft of a tract of land situated now in Tell Township Huntingdon County Contain-
 ing eighty seven acres and ninety six perch and the usual allowance of six per Cent for roads.
 &c Surveyed for the Heirs of John McClure the 24th & 25th days of June A.D. 1856. Being of a
 larger tract of land said to contain 114 1/2 ac and allowance Originally surveyed in pursuance of an
 order granted to Samuel Taylor, dated December the 17th A.D. 1767, and re-examined the 12th
 day of July A.D. 1871.*

To J.M. Campbell Esq. }
 Surveyor General.

James Glasgow C.S.
 Hunt. Co.

IN TESTIMONY that the above is a copy of the original remaining on file in
 the Department of Internal Affairs of Pennsylvania, made
 conformably to an Act of Assembly approved the 16th day of
 February, 1833, I have hereunto set my Hand and caused
 the Seal of said Department to be affixed at Harrisburg,
 this thirty-first day of July 1908

Henry A. ...
 Secretary of Internal Affairs.